



*Integrated marine solutions*

## **PT. Asianfast Marine Industries**

---

Ship Building | Ship Repair | Design & Engineering



### **Contact us :**

PT. Asianfast Marine Industries  
AMI Building, Jl. R.E. Martadinata Lot 02, Sekupang, Batam,  
Kepulauan Riau, Indonesia 29428

[www.asianfastmarine.com](http://www.asianfastmarine.com)

# The Asianfast Group



**PT. ASIANFAST MARINE INDUSTRIES**

*Integrated marine solutions*

[www.asianfastmarine.com](http://www.asianfastmarine.com)



*Asia's Favourite Fast Ferry Operator*

[www.batamfast.com](http://www.batamfast.com)



[www.tripcetera.com](http://www.tripcetera.com)



[www.asianfastmarine.com](http://www.asianfastmarine.com)

**PT. ASIANFAST MARINE INDUSTRIES**

# PT. Asianfast Marine Industries

Ship Building | Ship Repair | Design & Engineering

**PT. Asianfast Marine Industries** is a ship building and repair Company located in Batam Island, Kepulauan Riau, Indonesia. We are a one-stop integrated marine solutions provider specializing in aluminium vessel such as Passenger Ferries, High Speed Crafts, Naval Vessels, Coastal Patrol Vessels, Luxury Super Yacht etc. Our team has more than 100 years experience in ship building and repair, is equipped with modern facilities such as a 300 Ton Cimolai Mobile Boat Hauler 300, CNC water cutter, alloy welding machines, 40 by 50 Meter Fabrication workshop, 22 by 30 Meter Mechanical workshop, among others.

We can serve vessels up to 13 Meters width and 300 Displacement Weight Tonnage. We also provide repair service in floating condition alongside our jetty for larger vessel repair. We have a mess for vessel crew to stay during vessel on docking. Our strategic location allows us to serve Customers in the Asia Pacific region and further. With a materials and spare parts main distribution centre in Singapore just 45 minutes away, we can reduce lead time and vessel down time to give Customer best value for money.

PT. Asianfast Marine Industries has strategic partnerships with large engine manufacturers, abling Asianfast to do most engine repairs and overhaul in house. We also have strategic partnerships with experienced Fiberglass and Sail companies which enable Asianfast to offer a full range of repair and maintenance for composite Motor Yacht and Sail Yacht. We are working very closely with all designers to fullfil our Customer requests and maintain the highest quality of workmanship. We are committed to give the best service and cost savings to Customers by innovating proven methods and building skilled manpower in ship building and repair, with Safety First and fulfilling Class requirements.



## Yard

- Total area is 26,185 M2



- Production workshop area is 2,420 M2 with 2 units of 10 Ton overhead cranes



- Mechanical workshop with complete tools and equipments



- 150 meter of Jetty berth



- Electricity capacity 1 Megawatt
- 3 units of Backup Power Generator
- 10 rooms of Mess/Crew accommodation

## Yard Layout







## Equipment and Machineries



1 Unit of Mobile Boat Hauler Capacity 300 Ton and maximum width is 13 Meter



1 Unit of CNC Water Cutter 9 x 3 Meter



2 Units of Telehandler Machines



2 Units of 2 and 6 Meter Lathe Machines



1 Unit of 50T Crawler Crane



1 Unit of Universal Milling Machine



2 Units High Pressure Water Blaster 500 bar and 2 Units High Pressure Water Blaster 180 bar



1 Unit of 200 Ton Hydraulic Bending Machine



## New Building Project

### M/V Asianfast 1

Brief Specification :

- 260 Passengers
- 2x MTU 16V2000M72 1440 kW @2250RPM with FPP
- Speed 34 knots @100% MCR
- BV Class + HSC 2000 + SOLAS Chapter II
- Aluminium Construction



### M/V Sea Eagle 1 & 2

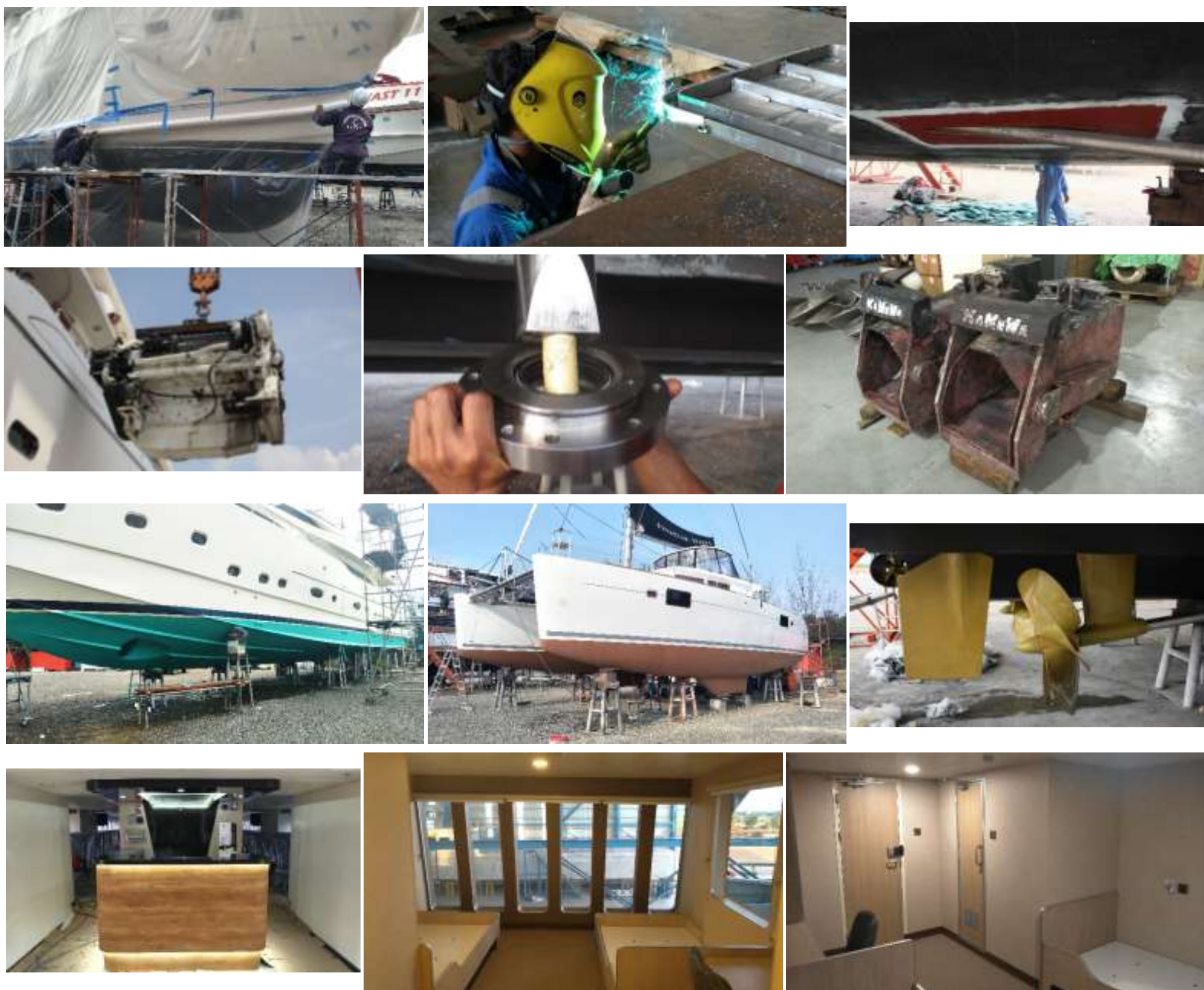
Brief Specification :

- 20-27 Passengers
- 2x Cummins QSB 355hp @ 2800 RPM with Waterjets
- Speed 25 knots @100% MCR
- RINA Class
- Aluminium Construction





## Repair and Maintenance Project



### Other repair and maintenance projects







 Partnership



**PT. Asianfast Marine Industries is the one and only MTU Service Workshop that covers the services within Batam, Bintan and Karimun Island (Kepulauan Riau Province).** Our experienced team has a proven track record in achieving targets in terms of time and quality assurance. We have a MTU certified team who is able to do the service and overhaul for engine models 183, 396, 2000 Series and in the near future that 4000 Series with special tools and parts ready in house.





*Integrated marine solutions*



# **PT. Asianfast Marine Industries**

**Ship Building | Ship Repair | Design & Engineering**

**Visit and Contact us :**

AMI Building, Jl. R.E. Martadinata Lot 02, Sekupang, Batam,  
Kepulauan Riau, Indonesia 29428  
[marketing@asianfastmarine.com](mailto:marketing@asianfastmarine.com)  
[www.asianfastmarine.com](http://www.asianfastmarine.com)

**Adrian Webby**  
**General Manager**

Indonesia Mobile +62 811 774 0093  
Singapore Mobile +65 9177 4383  
Batam Office +62 778 321 120 ext 623  
Singapore Office +65 6270 0311 ext 623  
[gm@asianfastmarine.com](mailto:gm@asianfastmarine.com)

**Freddy Tan**  
**Sales Engineer**

Indonesia Mobile +62 811 691 0090  
Singapore Mobile +65 9728 6618  
Batam Office +62 778 321 120 ext 645  
Singapore Office +65 6270 0311 ext 645  
[tech-sales@asianfastmarine.com](mailto:tech-sales@asianfastmarine.com)



[www.asianfastmarine.com](http://www.asianfastmarine.com)

**PT. ASIANFAST MARINE INDUSTRIES**